

THE AIRPLANE SPOT IN THE FOREST

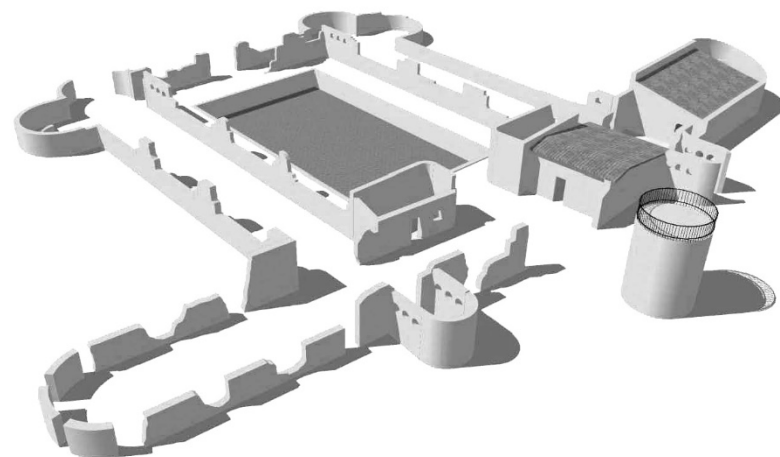
Authors: Patricia Reus & Jaume Blancafort. BLANCAFORT-REUS ARQUITECTURA
Category: B (Exterior spaces)
Register code: 06b001344

6th edition European Award

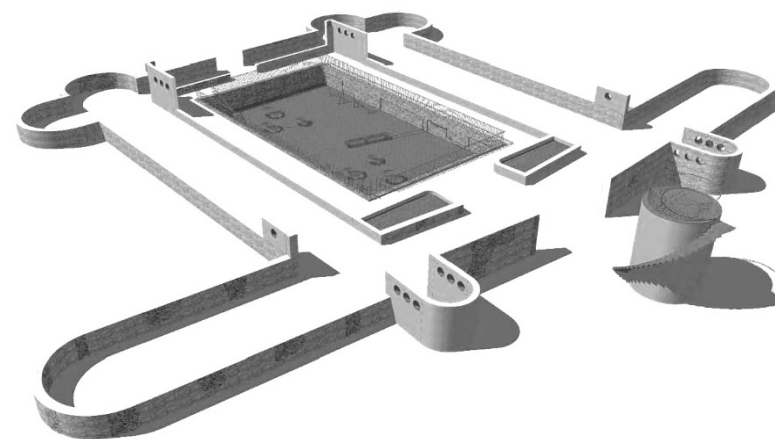
AHI Architectural
Heritage
Intervention



In addition, the area surrounding this enclave is a wooded extension that has been invading the area generating an attractive coexistence between ruins and nature. So, given the state of abandonment, deterioration and disfigurement of the architectural remains, the proposal has tried to recover the historical memory of the place, evoking the romanticism of its conception and emphasizing the fusion between human action and the mountain. To this end, the project has focused on two issues:



PRE-INTERVENTION STATE



INTERVENTION PROJECT

1. TO REVEAL THE SHAPE OF THE PLANE

For this purpose, the bodies foreign to the original project are dismantled and the heights are regularized, leaving the perimeter wall higher so it allows to have a clear understanding of the space meanwhile the interior walls remain at a level that invites to rest. With recovered stone and mortars made with local soil, some walls that had disappeared with time and despoilment have been replaced in a sustainable way. Lastly, the circular holes that evoke the morphology of the plane have been restored.